



Chamber Connection

March, 2011

Your Guide To The Business Community And the Craig Chamber Of Commerce

Governor to speak at State of the County

Governor John Hickenlooper will be in Craig March 9 to headline the Craig Chamber of Commerce's annual State of the County event.

"We're amazed that the governor was so interested in coming to Northwest Colorado so early in his administration," Chamber Executive Director Christina Oxley said. "I think this reflects well on the Governor's commitment to serve all of Colorado, not just the Eastern Slope."

Gov. Hickenlooper will be the keynote speaker at the March 9 event, giving a State of the State address with an emphasis on the issues affecting Moffat County.

The event will also feature State of the City, State of the



County and State of the Chamber speeches along with awards for small business, large business, businessperson and citizen of the year. There will be a new "Up and Coming Businessperson of the Year award presented.

Tickets are \$40 for Chamber members, \$50 for non-members and are available at the Craig Chamber of Commerce/Moffat County Visitor Center, 360 E. Victory Way or online at www.craig-chamber.com/events.

The evening begins with cocktails at 6 p.m., which the Governor will attend. Dinner will be served at 6:30 p.m. and the program will start at 7.

State of the County is sponsored by KRAI FM & 55Country, the Craig Daily Press and the Craig Chamber of Commerce.

While in Northwest Colorado, Gov. Hickenlooper is tentatively scheduled to meet with service clubs in Routt County, meet with a group of Moffat County business owners,



participate in the Office of Economic Development and International Trade's regional economic development roundtables and speak at State of the County.

Crack down on late payers - 7 tips for small business owners

Small Business Development Center Network Tip

Customers who don't pay on time have always been the bane of small business owners' existence. But in the past couple of years, the late-payer problem has grown into a life threatening condition for some small business owners. If you're having trouble getting your invoices paid on time, here are seven tips for getting late payers' checks in the door:

1. Track payments carefully. Know when payments are due so you can attack the overdue-bill problem immediately.

2. Try a friendly call or email. Before going ballistic, try a quick, friendly reach out along the lines of "Hi, I was just taking a look at my accounts receivable and noticed your payment due yesterday hasn't

arrived. Can you let me know when I should expect the payment? If you need another copy of the bill, just let me know." This will get many off the dime — sometimes the bill really has been lost in the shuffle.

3. Choose the right person to follow up. If you have trouble with confrontation, consider whether an employee or even a relative might be put to work making late-bill calls. Someone who can be firm but polite is best.

4. Offer a repayment plan. If the customer is having trouble coming up with the full amount they owe, offer to give them more time without penalty if they send half right now. This preserves the relationship while also getting some cash in the door right away.

See TIPS on page 3.

Craig selected as venue for regional OEDIT meeting

The Craig/Moffat Economic Development Partnership is excited to announce the second of Governor John Hickenlooper's Bottom-Up Economic Development Plan Initiative meetings will be held in Craig on March 9.

The Colorado Office of Economic Development and International Trade (OEDIT), along with Colorado State University's Office of Engagement and Extension and other state partners are holding the second round of "Next Steps" Regional Meetings for the Governor's Bottom-Up Economic Development Plan Initiative.

After conducting first round of regional meetings around the state, OEDIT will roll out the "Next Steps". These regional meetings will provide and overview of the process, timelines, tools, resources and identify the objectives, outcomes

and roles counties, regions and the state for this process.

The Region 11 meeting (Moffat, Routt, Rio Blanco, Garfield, and Mesa Counties) is scheduled for 3 p.m. to 5 p.m. March 9 at The Center of Craig.

Anyone interested in economic development and ensuring the statewide plan includes local needs in encouraged to attend.

Anyone interested in economic development issues or the statewide plan is encouraged to get more information at www.advancecolorado.com/bottomup.

There you will find an Online Survey, county, regional and state data, county plan template, county and regional economic development plans, regional meeting notes, comments and questions

For more information, email input@state.co.us.

Your Chamber works for you

CHAMBER SERVICES

- ◆ More than \$280,000 a year stays in Moffat County and is spent at local businesses because of the Craig Chamber of Commerce's spree dollar program.
- ◆ As home to the Sportsmen Information Center and the Moffat County Visitor's Center, the Craig Chamber of Commerce offers "one-stop-shopping" for visitors, new residents and businesses.
- ◆ The Craig Chamber of Commerce staff, board and ambassadors work with community groups to host special events for residents to enjoy and to draw visitors.
- ◆ Event planners and visitors go first to the Craig Chamber of Commerce for the community's best source of event information. The Chamber manages a centralized calendar of events.
- ◆ Live, work and play in Moffat County — The Craig Chamber of Commerce has extensive information for businesses, residents and visitors.
- ◆ Register your OHVs and snowmobiles at the Chamber office and pick up your annual state park pass.
- ◆ Looking for maps? The Chamber of Commerce has city, county, forest service and BLM maps.
- ◆ We sell national forest wood-cutting and Christmas tree cutting permits.

MEMBERSHIP BENEFITS:

- ◆ Information about your business is available at www.craig-chamber.com, one of Moffat County's most-visited Web sites. Increase your presence with banner ads.
- ◆ Better your business. The Craig Chamber of Commerce offers several educational seminars throughout the year on topics ranging from customer service to marketing strategies.
- ◆ Get the jump on your competitors. Chamber members have access to information on people or businesses considering relocating to Moffat County.
- ◆ The Chamber is the county's premier networking association. Get mailing lists, business information and make connections at seminars and social events.
- ◆ Free notary services for members.
- ✦ Have a mass mailing? Save time by using the Chamber's folding machine. Automated single and triple folding.
- ◆ Have a mass mailing? Save time by using the Chamber's folding machine. Automated single and triple folding.

We're on a mission

The Chamber's mission is to build a strong economic environment which contributes to business success by:

- ◆ Supporting public policy which create a viable business community.
- ◆ Providing quality membership services.
- ◆ Supporting aggressive economic and tourism development programs.

MARCH EVENTS

March 1, 8, 15, 22, 29 • Moffat County Commissioners' meeting

Moffat County Commissioners' weekly meeting.

Time: 8:30 a.m. - noon
Website: www.moffat.co.us

Location: Moffat County Courthouse, 221 W. Victory Way, commissioners' meeting room, second floor

Contact: Erin Miller at (970) 824-5517

Email: emiller@moffatcounty.net
Date/Time Details: Every Tuesday

March 1, 3, 8, 10, 15, 17, 22, 24, 29, 31 • Soup Kitchen at St. Michael's Church

If you're in need of a good meal, the soup kitchen is open to anyone at no charge twice a week. Tuesday is lunch and Thursday is dinner. Groups of community members serve and prepare the meals.

Location: St. Michael's Catholic Church, 678 School St.

Contact: (970) 824-5330
Date/Time Details: Tuesday 11:30 a.m. - 1:30 p.m. and Thursday 4 - 6 p.m.

Fees/Admission: Free

March 1 • Yampa Valley PieceMakers Quilt Guild board meeting

PieceMakers Quilt Guild board business meeting.

Time: 6:30 - 8 p.m.

Location: Hampton Inn & Suites, 377 Cedar Ct.

Contact: Roberta Armstrong (970) 824-4617 or Lorraine Moon (970) 824-9568

Date/Time Details: The first Tuesday of every month.

Fees/Admission: Free

March 2, 9, 16, 23, 30 • AWANA at Calvary Baptist Church

AWANA for children 3-years-old through 6th grade. Awana is an awesome adventure for our next generation to learn the Word of God and have fun doing it.

Time: 6 p.m. - 7:15 p.m.

Website: www.calvarycraig.org
Location: Calvary Baptist, 1050 Yampa Ave.

Contact: Janet Wright at (970) 824-5222

Email: janetwright@rocketmail.com
Date/Time Details: Wednesdays at 6 p.m.

Fees/Admission: Dues are \$10 for the semester. Uniform, if needed, is \$10

March 2, 9, 16, 23, 30 • Aging Well - Wellness Wednesdays

The Aging Well Program sponsors Wellness Wednesdays for adults 50 years old and older. Options include art, writing and exercise classes.

Lunch is served at each week's lunchtime presentation. Register for activities before each Wednesday.

Time: 9 a.m. - 7 p.m.

Location: American Legion Post,

formerly the Shadow Mountain Clubhouse.

Contact: Aging Well (970) 871-7676

Date/Time Details: Every Wednesday from 9 a.m. - 7 p.m.

Fees/Admission: none

March 3, 10, 17, 24, 31 • Yampa Valley Chorus of Sweet Adelines practice

Learn the art of barbershop singing. There will be a show next year and a tour of Hawaii to meet another chorus and have the opportunity to teach barbershop singing.

Time: 7 - 9 p.m.

Location: Craig Middle School - enter through front side door

Contact: Aaron Gillett

Email: aarontery@aol.com

Date/Time Details: Every Thursday at 7 p.m.

Fees/Admission: Only applicable if you join

March 4, 11, 18, 25 • Elks Bingo

Come enjoy an evening of bingo at Elks Lodge #1577. One pack of cards is \$20, two packs is \$30, three packs is \$37.50 and additional packs are \$5 each. Those 18 and under can purchase a half pack for \$10.

Time: 6 - 10 p.m.

Location: Elks Lodge #1577, 43 W. Victory Way

Contact: Frank Sadvar (970) 824-6131

March 4 - 5 • Kiwanis Play 2011

Hilarious — and slightly off-color — spoof of local, state and national political events. Smoking is not allowed at either performance. Proceeds help fund a variety of youth, senior citizens and disabled persons projects in Craig and Moffat County

Time: 8 - 10 p.m. both nights

Location: Moffat County Fairgrounds Pavilion

Contact: For more information contact Bo Lyons (970) 824-9481

March 8 • SCORE - Small Business Success Steps: Marketing & Advertising

Does your marketing and advertising need a boost in this new (and more difficult) economy? Need some new ideas to reach out to your current customers? Want some help finding new customers?

Time: 11:25 a.m. - 1 p.m.

Website: www.cmedp.com

Location: Moffat County Courthouse, second floor conference room.

Contact: Darcy Owens-Trask 826-2039

Email: director@cmedp.com

Fees/Admission: \$10 or free for CMEDP and Chamber members

March 8 • Open mic night

Share your poetry, comedy act or music with a live audience at open mic night.

Time: 6:30 - 9 p.m.

Location: Carelli's, 465 Yampa Ave.

Contact: (970) 824-6868

Fees/Admission: Free

March 8, 22 • Craig City Council

The Craig City Council meets the second and fourth Tuesday of each month. Log on to www.ci.craig.co.us for meeting agendas and minutes.

Time: 7:30 p.m.

Website: www.ci.craig.co.us

Location: City Hall, 300 W. 4th St.

Email: jferree@ci.craig.co.us

Fees/Admission: None

March 9 • State of the County 2011

Governor John Hickenlooper will headline this, the premier information gathering and networking event in Moffat County. Come hear what Moffat County, the city of Craig and the Craig Chamber of Commerce have in store for 2011. Dinner and dessert will be served. Cash bar.

Time: 6 - 9 p.m.

Website: www.craig-chamber.com

Location: Holiday Inn of Craig, 300 S. Hwy 13

Contact: Christina Oxley (970) 824-5689

Email: director@craig-chamber.com

Fees/Admission: Tickets are available at the Chamber of Commerce, 360 E. Victory Way or can be purchased online at www.craig-chamber.com. Tickets: \$40 for chamber members or \$50 for non-members

March 10 • How to Start a Business 101: Will My Idea Work and Will It Make Any Money?

Do you want to start a business? Do you want to know if your idea will be profitable? Would you like some free help to get started? If you answered "yes," then First Steps is for you.

Learn: How to determine if your idea is profitable

The top three things every entrepreneur needs to know to succeed How much money you will need to start and where to get it

Website: www.cmedp.com

Location: Moffat County Courthouse second floor conference room - Please use the North door.

Time: 6:30 - 9 p.m.

Contact: Darcy Owens-Trask (970) 826-2039

Email: director@cmedp.com

Fees/Admission: Free - Sponsored by CMEDP

March 12, 26 • American Legion Post #62 Bingo

American Legion Post #62 has bingo every other Saturday evening. All are welcome to attend.

Time: 5:30 - 10 p.m.

Location: Elks Lodge, 43 W. Victory

Contact: Frank Sadvar at (970) 620-0874 or the Post (970) 824-3625

Fees/Admission: Minimum \$20 for the full event

March 15 • Yampa Valley PieceMakers Quilt Guild

Join the Yampa Valley quilt guild in their monthly meetings and enjoy presentations from special guests. This month's program is round robin topics. The guild meets the third Tuesday of every month.

Time: 6:30 - 8 p.m.

Location: Hampton Inn, 377 Cedar Ct.

Contact: Roberta Alstrom (970) 824-4617 or Lorraine Moon (970) 824-9568

Fees/Admission: Members are free and guests are \$3

March 16 • CMEDP Board Meeting Craig/Moffat Economic Development Partnership's regular monthly board meeting.

Community welcome.

Time: 11:30 a.m. - 1 p.m.

Website: www.cmedp.com

Location: Moffat County Courthouse second floor conference room

Contact: Darcy Trask, (970) 826-2039

Email: director@cmedp.com

Date/Time Details: Third Wednesday of the month

Fees/Admission: Free

March 18 - 20 • Yampa Valley Classic Youth Basketball Tournament

This tournament is for 6th, 7th and 8th grade boys and girls. There is a three game guarantee for all teams. Candlewood Suites, Holiday Inn and Best Western Deer Park Inn are all offering special rates to incoming teams and families.

Location: Games will be played at:

•Moffat County High School, 900 Finley Lane

•Craig Middle School, 915 Yampa Ave

•Sandrock Elementary, 201 E. 9th St.

•Boys & Girls Club of Craig, 1324 E. Hwy 40

Contact: Call Shane Camilletti (970) 824-8185, fax (970) 824-8188

Email: shanec@mtnwst.com

Fees/Admission: Entry fee is \$140 per team. Entry deadline is March 14.

Mail completed entry form to: Moffat County Youth Basketball, 808 Ashley Rd., Craig, CO 81625

March 25 - 26 • KRAI Spring Expo

Jump into spring by seeing Northwest Colorado's premier new products and services show, sponsored by KRAI & 55 Country.

Time: Friday noon-7 p.m. and Saturday 10 a.m. - 7 p.m.

Location: Centennial Mall, 1111 W. Victory Way

Contact: Vicki Gutierrez at (970) 824-6574

March 28 • River City 6 in concert

Come out and enjoy the show as the members of the River City 6 dazzle the crowd with lightning fast licks, laughable antics and unforgettable charm.

Time: 7 - 9 p.m.

Website: www.craigconcerts.org

Location: Moffat County High School Auditorium
Contact: Julie Dempster
Email: heydempster@gmail.com
Fees/Admission: Free with membership. Membership fee: \$35 adult, \$10 student, \$80 family

March 29 - April 7 • Greater Sage Grouse Viewing Trips

Join CEC, the Wilderness Society, Center for Native Ecosystems and our coalition partners in northwest Colorado this spring to watch one of the West's most captivating sights - the Greater Sage Grouse mating ritual.

Website: www.ourcolorado.org

Location: Viewing area is about one hour north of Craig.

The viewings will take place within the confines of a purpose built viewing trailer, however a short hike (about 300 yards over variable terrain) will be required to get to the viewing site.

Contact: Sasha (970) 824-5241

Email: sasha@ourcolorado.org

Date/Time Details: Trips will leave from Craig at 4:30 a.m., driving roughly one hour north of town and returning mid to late morning after additional wildlife watching opportunities.

Tour dates:
March 29
April 4
April 6
April 7

Fees/Admission:
\$50 includes pre-trip orientation packet, transportation from Craig to/from the lek, a light breakfast and additional wildlife watching opportunities.

Special limited offer: for \$75 you'll also receive a one-year CEC membership, as well as a matted 4" x 6" print of a Greater Sage Grouse male in full strut taken in 2010 by Colorado professional photographer Todd Patrick. (Only 25 available.)

To include your event, or to see additional events, log on to www.craig-chamber.com and click the "Events" button. Choose "submit your own event" and fill out the event details. It's that easy!

Craig Mental Health Center
A Division of Colorado West Regional Mental Health, Inc.
439 Breeze St. • Suite 200
(970) 824-6541

Don't Run Dry!
Call us today for ALL of your Pump Sales & Service needs.

Home Inspection Provided

MOUNTAIN STATES COMPANY
CRAIG, COLORADO

- LICENSED
- BONDED
- INSURED

LIC. #438 & 846
424 RUSSELL STREET • CRAIG, CO 81625
970-824-6568 • EMERGENCIES CALL 970-824-5593 • 970-824-3745

The CITY OF **CRAIG**

supports local businesses.
Shop Craig

Large to Small We Care for them All

Kelly Hepworth, D.V.M.
Neil McCandless, D.V.M.
Gary Visintainer, D.V.M.

24 Hour EMERGENCY SERVICE

BEAR CREEK ANIMAL HOSPITAL
(970) 824-5964
(970) 824-7567 Fax
2430 E. Victory Way Craig, Colo.

Partner News

Yampa Valley Partners seeks community input

Yampa Valley Partners is interested in feedback from community members about their organization and the projects they undertake. Like all non-profit organizations, they are working to ensure they are providing services that residents need and value.

To obtain a link to the 10-question survey, email kate@yampavalleypartners.com. All survey submissions are anonymous and due by March 2, 2011.

For more information on Yampa Valley Partners and to see copies of their reports: Community Indicators, quarterly economic forecast, monthly fast facts or the Regional Energy Education Plan, go to www.yampavalleypartners.com or contact Executive Director Kate Nowak at (970) 824-1133.

CEC soliciting discounts for grouse tour participants

Colorado Environmental Coalition, The Wilderness Society and other non-profit partners are planning two weeks of grouse tours in late March and early April of 2011. Last year, 85 people participated in the Northwest Colorado sage-grouse tours, most of who traveled to Craig from out of the region, some as far as Great Britain. This year the tours have been redesigned to encourage tour participants to stay in Craig for one or two nights. Local businesses have the opportunity to benefit.

Businesses are being sought who are willing to give grouse tour attendees special discounts.

Grouse tour guests are provided with detailed pre & post trip information. This includes names and contact details for any businesses willing to provide special trip incentives. Last year several hotels and eateries offered special grouse tour discounts. The response from those businesses

Tips: Take precautions against late payments

Continued from page 1.

5. Rebill and add a late charge. If the customer isn't responsive, when the bill hits 30 days overdue, send another bill with a late charge of between 1 percent and 3 percent. I've personally had clients pay up immediately once they realized their bill was going to get bigger each month they delayed payment.

6. Take preventive steps. If your business has a lot of late payers, reconsider your credit-approval process. Research customers' credit history more thoroughly before granting credit — run a thorough credit report and check Dun & Bradstreet if they're a big company, or your secretary of state's office for tax liens on smaller companies. Consider extending less credit or asking for a 50 percent up-front payment.

was overwhelmingly positive as they each saw results.

If you are interested in offering a discount, please contact Sasha atsasha@ourcolorado.org or leave a message at 970-824-5241 to learn more.

Sage grouse tour presents business opportunity

Moffat County is one of the few areas of Colorado where Greater Sage Grouse are still found in healthy numbers. Moffat County also offers a reasonable access point for people interested in viewing dusky and sharp-tailed grouse. Grouse viewing tours in 2010 provided a model that proves there are a significant number of people willing to travel to Craig to view the grouse.

The Colorado Environmental Coalition would like to visit with anyone who might be interested in taking these and other eco-tours to the next step - commercialization. The CEC is tentatively planning a special evening discussion and trip date specific to business development. Space is limited - only those with a serious interest are asked to contact Sasha at sasha@ourcolorado.org or call and leave a message at 970-824-5241 to learn more.

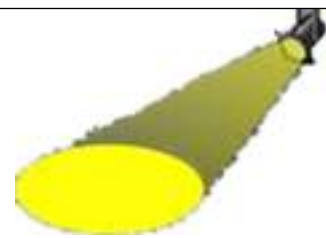
If you are interested in turning eco-tours into a business, don't miss the FREE March 10 First Steps class: How to Start Your Own Business 101, sponsored by the Craig/Moffat County Economic Development Partnership. The class is offered from 6:30 to 9 p.m. the second Thursday of every month in the Moffat County Courthouse second floor conference room. Learn how to determine if your idea is profitable, the top three things every entrepreneur needs to know to succeed, how much money you will need to start and where to get it and more.

Please RSVP to Darcy Trask at 970-826-2039 or director@cmedp.com.

7. Consider guaranteed-payment methods. With troublesome contractors, consider working through an intermediary agency or online platform such as Elance, where money is placed in an escrow account at the beginning of the job. Instant-payment methods such as PayPal can also end the problem.

The Colorado Small Business Development Center (SBDC) Network is part of the Colorado Office of Economic Development & International Trade (OEDIT). The Colorado Small Business Development Center (SBDC) Network is dedicated to helping small businesses throughout Colorado achieve their goals by providing free, confidential counseling and various training programs. The SBDC combines information and resources from federal, state and local governments with those of the educational system and the private sector to meet the specialized and complex needs of the small business community.

Business Spotlight



Thrift Shop

1695 W. Victory Way • (970) 824-6139

Number of employees: 4

Number of years in business: 21

What is your specialty? Used and new merchandise. We are an "everything" store.

What is your business or organization philosophy? Friendliness and good service..

Is there something your business or organization offers that people don't seem to know about?

Most everything, a lot of people have lived here for a long time and still don't know we exist.

Be a Chamber Select business

Moffat County is filled with people who set the gold standard for business practices. They consistently exceed their customer's expectations and have the ideas and follow through that it takes to be successful.

The Craig Chamber of Commerce would like to recognize and celebrate those businesses as part of its all new "Chamber Select" program.

Being a Chamber member increases your credibility as a business. According to a Schapiro Group study, when consumers know that a small business is a member of the chamber of commerce, they are 44 percent more likely to think favorably of it and 63 percent more likely to purchase goods or services from the company in the future.

We want to add another level to that credibility through the Chamber Select program.

Why be a Chamber Select business?

Chamber Select businesses are identified with the Chamber Select seal in the Chamber's online business directory, in the main body of the Chamber's website (includes a direct link to your business directory listing) and in all Chamber publications.

Chamber Select businesses receive a Chamber Select window sticker so your customers know your business stands out and Chamber Select businesses will be listed in the Chamber's newsletter and will be recognized in the newsletter upon becoming a Chamber Select business.

All of that tells customers that you are a leader in your industry and the service

and quality they get from you is consistently excellent.

It's a great way, and an easy way, to let potential customers know what you already do -- they won't be sorry they chose to do business with you as opposed to you competitors.

It assures your customers that someone outside your business has evaluated your business and certifies that you meet the Chamber's high standards to be named a Chamber Select business.

Businesses must be invited to become Chamber Select members. To be invited, businesses must receive three nominations. Nominations are accepted from customers, other businesses and employees, though not more than one nomination can be from an employee or any other person employed by the business.

Businesses can also be invited if 50 percent of their workforce (or 10 employees, whichever is fewer) has attended any form of training in time management, leadership or customer service. Proof of attendance is required. Courses are available online or through the Chamber. Inquire by calling (970) 824-5689. Other courses (SkillPath, industry specific) also qualify.

A business must be a Chamber member in good standing.

Chamber Select businesses are expected to meet this additional criteria, as applicable, verified by a Chamber representative.

Contact the Chamber at (970) 824-5689 for more information.



CHAMBER CONNECTION

Board of directors

The Chamber's 12-member board of directors meets at 11:30 a.m. the second Thursday of each month. Members are always welcome.



Jim Herschberg
Trapper Mine
(970) 826.6171
jimh@trappermine.com



Vice-president: Mardi Anson
Anson Excavating
(970) 824-0382
anson1050@msn.com



Treasurer: Missy Bonaker
Bonaker & Assoc.
824-4156
bonaker@nctelecom.net



Gene Bilodeau
CNCC1
(970) 824-7071
gene.bilodeau@cncc.edu



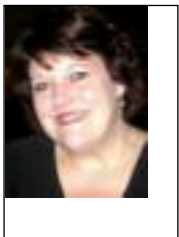
Don Jones
Craig Steel
(970) 824-6553
djcraigsteel@qwestoffice.net



Gail Severson
Severson Supply
(970) 824-9481
gseverson@wreawildblue.org



President: Joe Bird
Cook Chevrolet
(970) 824-2100



Renee Campbell
Holiday Inn of Craig
(970) 824-4000
rcampbell@ardenthotels.com



Jeff Smith
Advantage Water Technologies
(970) 620-6911
jeff@advantagewatertechnologies.com



Jeremy Mattingly
Walgreens
(970) 824-0155
mattingley@q.com



RaChell Novacek
Union Telephone
(970) 756-4109
rachelln@unionwireless.com

6TH ANNUAL CHILI-COOKOFF DRAWS MORE THAN 140 TASTERS



The Craig Chamber of Commerce Ambassadors' 6th Annual Chili Cook-off was a hit. With 11 entries and 140 tasters, this year's event had the highest level of participation ever. Mayor Don Jones, school district Superintendent Joe Petrone and Councilor Terry Carwile volunteered to judge the entries and many ambassadors were on hand to make the event a success.

Thank you to:

- Adriana Robbins with State Farm Insurance
- Audrey Anna Charchalis with Bank of Colorado
- Emily Scoles with United Country Brass Key Realty
- Vicki Burns with United Country Brass Key Realty
- Matt McCarthy with MoCo School District
- Laurie Ogden with Mountain West Insurance
- Delaine Voloshin, School to Work Alliance



George Trujillo won the People's Choice award with his Flattop Chili.



Lori Gowdy (on behalf of First National Bank of the Rockies) won first place in the green chili category



Troy Schaus won first place in the red chili category with T-Roy's Chili.

A very special thank you to the businesses who donated prizes or supplies. This event would not have been a success without you:

- State Farm Insurance
- The Embroidery Shoppe
- The Flower Mine
- Murdoch's
- Carelli's
- Rocky Mountain Auto
- Cook Chevrolet Subaru

Thank You donors

- Eastside Liquor
- Casa Loya
- High Performance Car Wash
- JW Snacks
- United Country Brass Key Realty
- Boyco

- City Market
 - Wendy's
 - Amerigas
 - McDonald's
 - Napa Auto Parts
 - A NuView Auto Glass
 - Kester's Jewelry
- And a big thank you to the Wyman Museum for providing a wonderful venue and helped in any way they could.

March Anniversaries

Moffat County Commissioners	1998	Trapper Mining, Inc.	1998	Creskide Guest Cabin & Suites	2005
Maybell Park	1998	Pughe, Barbara	1998	Loyds Cleaners	2005
Chapman's Automotive Service Center, Inc.	1998	Simons Petroleum – Trevco	1998	Bank of America Home Loans	2006
Bear Creek Animal Hospital	1998	Northwest Colorado Visiting Nurse Association	1998	Wells Fargo Home Mortgage	2006
Yampa Valley Golf Association	1998	Victory Motors of Craig, Inc.	1998	Integrated Community/Comunidad	2006
Yampa Valley Electric Association	1998	Routt/Moffat Wool Growers	1998	Integrada	2006
Samuelson's True Value Hardware	1998	CAPS	1999	Forbes Certified Welding, LLC	2007
Tri-State Generation & Transmission	1998	Rocky Mountain Auto, Inc.	2000	Meeker Chamber of Commerce	2008
TLC Carpet One	1998	Northwest Services, LLP	2000	Grand Olde West Days Cmttee	2008
Masterworks Mechanical	1998	The Paint Dabbers	2002	Galaxy Restaurant	2009
Voyich, Dushan DMD	1998	Craig Powersports	2004	Maurices	2009
Victory Vision Associates	1998	American Legion Post 62	2004	Allan D. Weimer, D.D.S.	2010
T & H Napa Auto Parts, Inc.	1998	Yampa Valley Baptist Church	2004	Moffat Family Clinic	2010
				MSG Ready-Mix	2010